



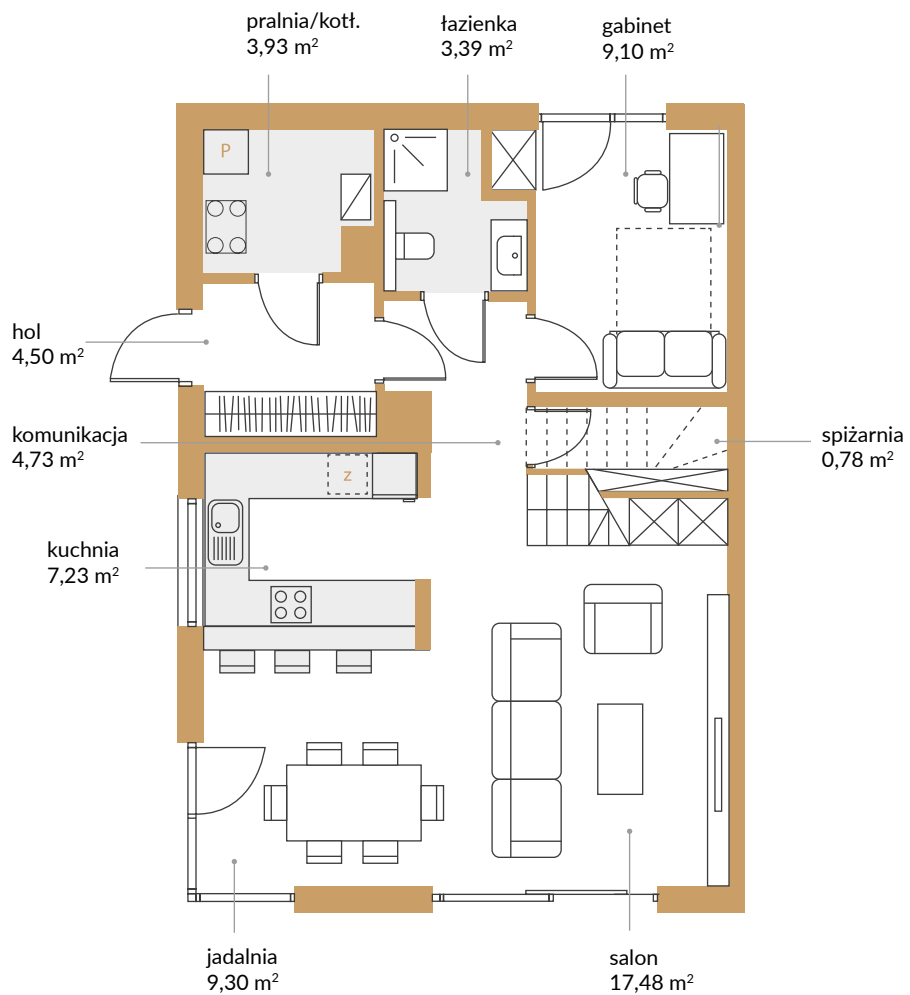
WILLE

JUSTOWSKIE

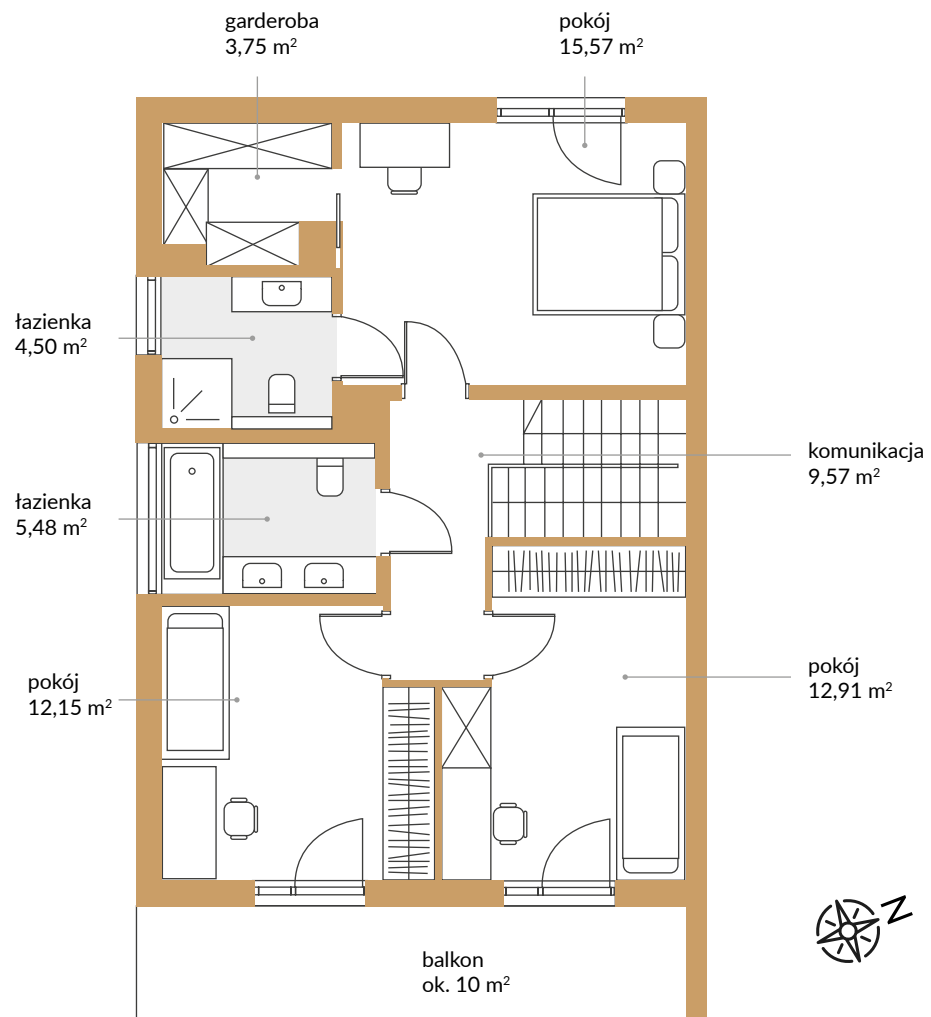
DOM D | Lokal 1

pow. domu: 124,17 m²
pow. garażu: 15,82 m²
suma: **139,99 m²**

Parter: 60,44 m²



1 piętro: 63,73 m²

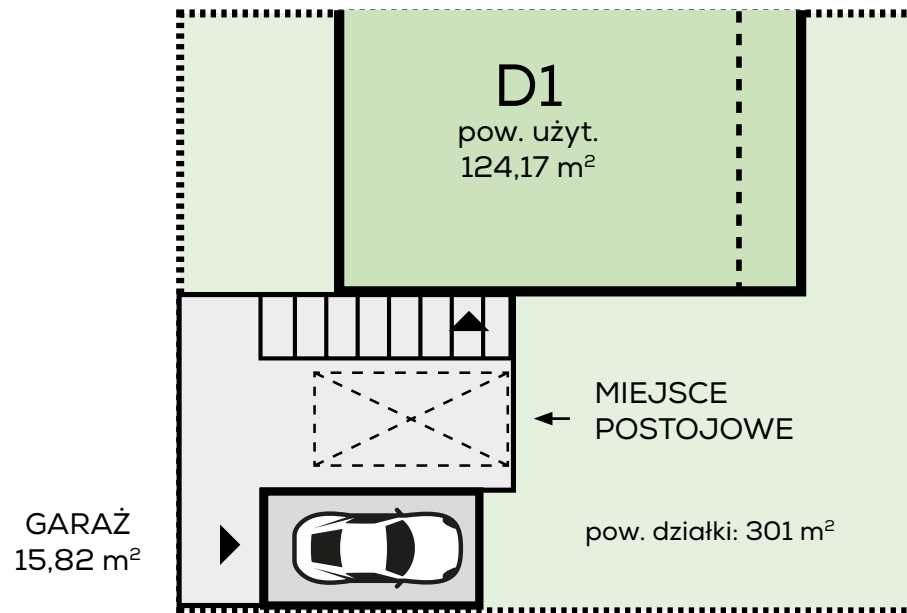




WILLE

JUSTOWSKIE

DOM D | Lokal 1



ZAGOSPODAROWANIE TERENU

