

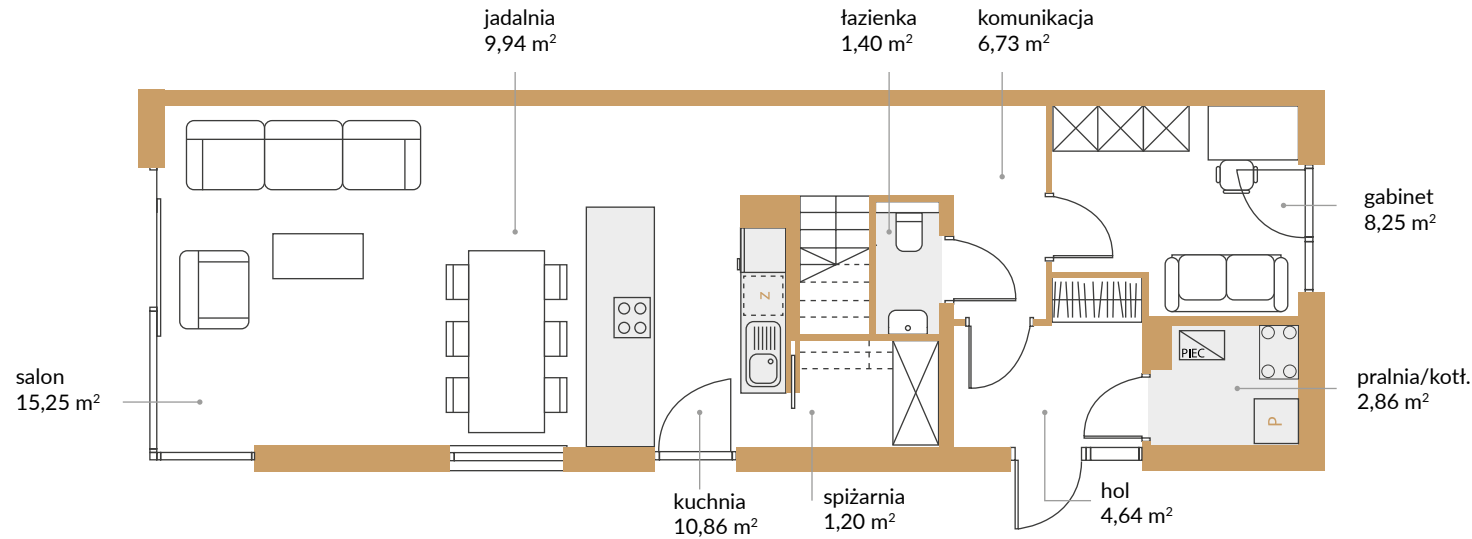


WILLE

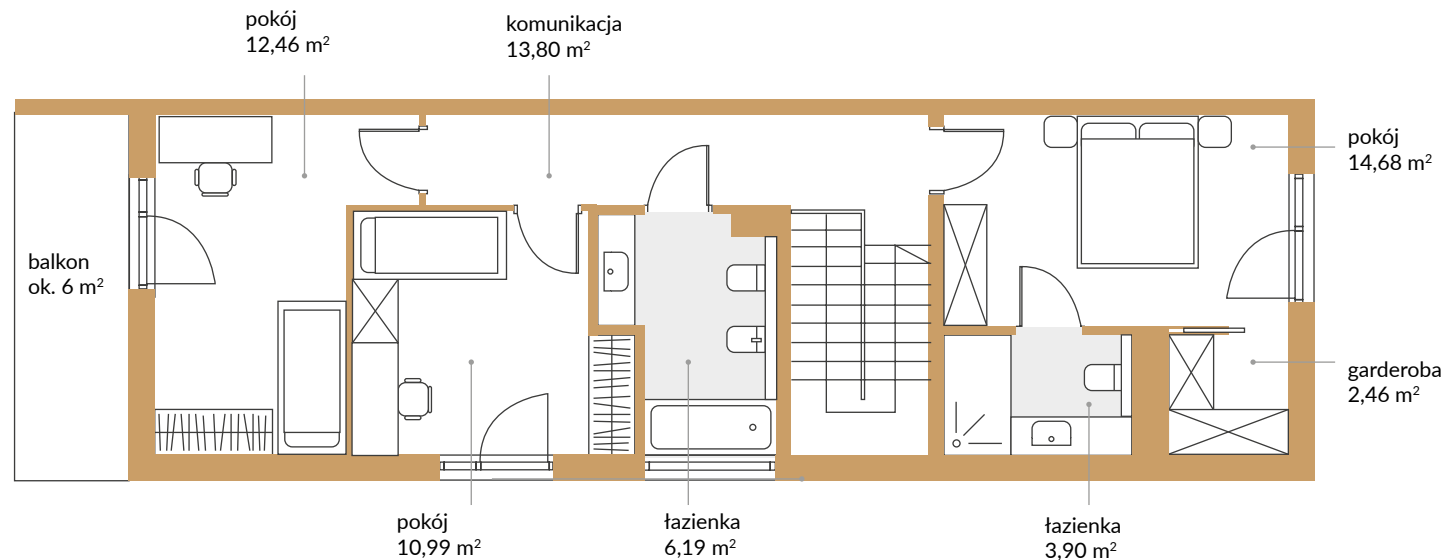
JUSTOWSKIE

DOM C | Lokal 1

pow. domu: 125,43 m²
pow. garażu: 15,82 m²
suma: **141,25 m²**



Parter: 61,13 m²



1 piętro: 64,30 m²

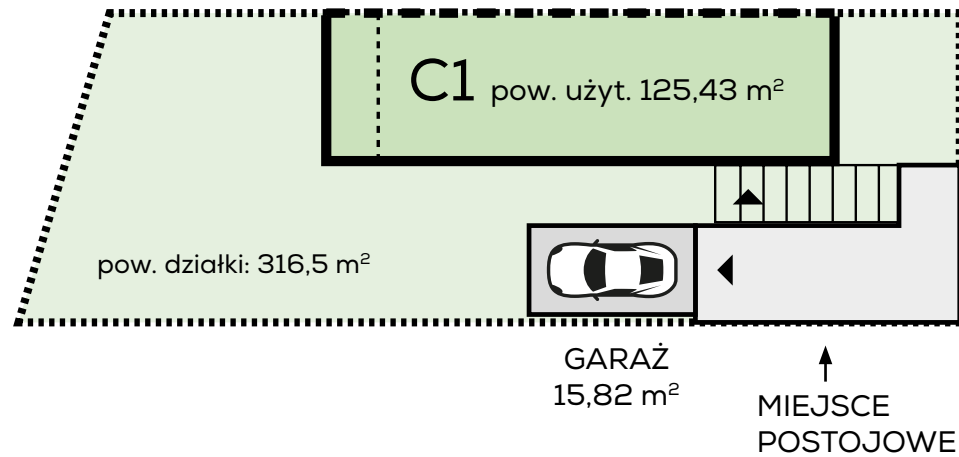




WILLE

JUSTOWSKIE

DOM C | Lokal 1



ZAGOSPODAROWANIE TERENU

