



WILLE

JUSTOWSKIE

DOM A | Lokal 2

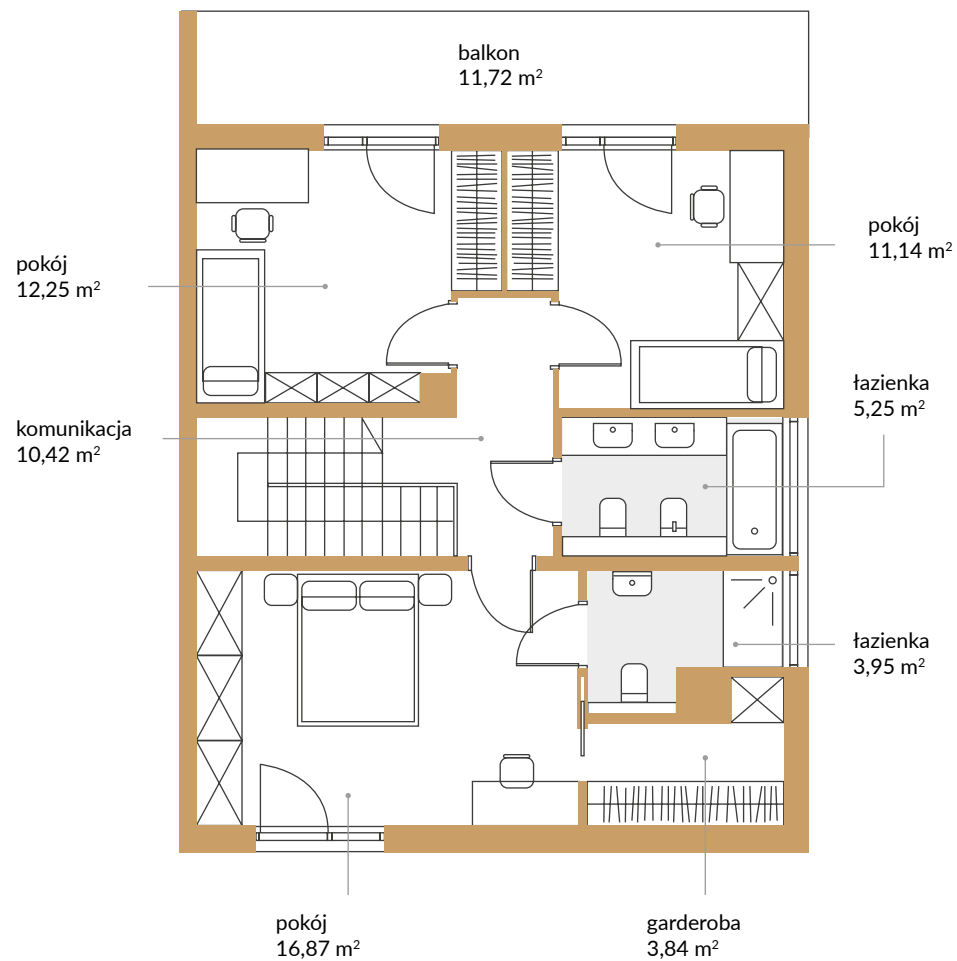
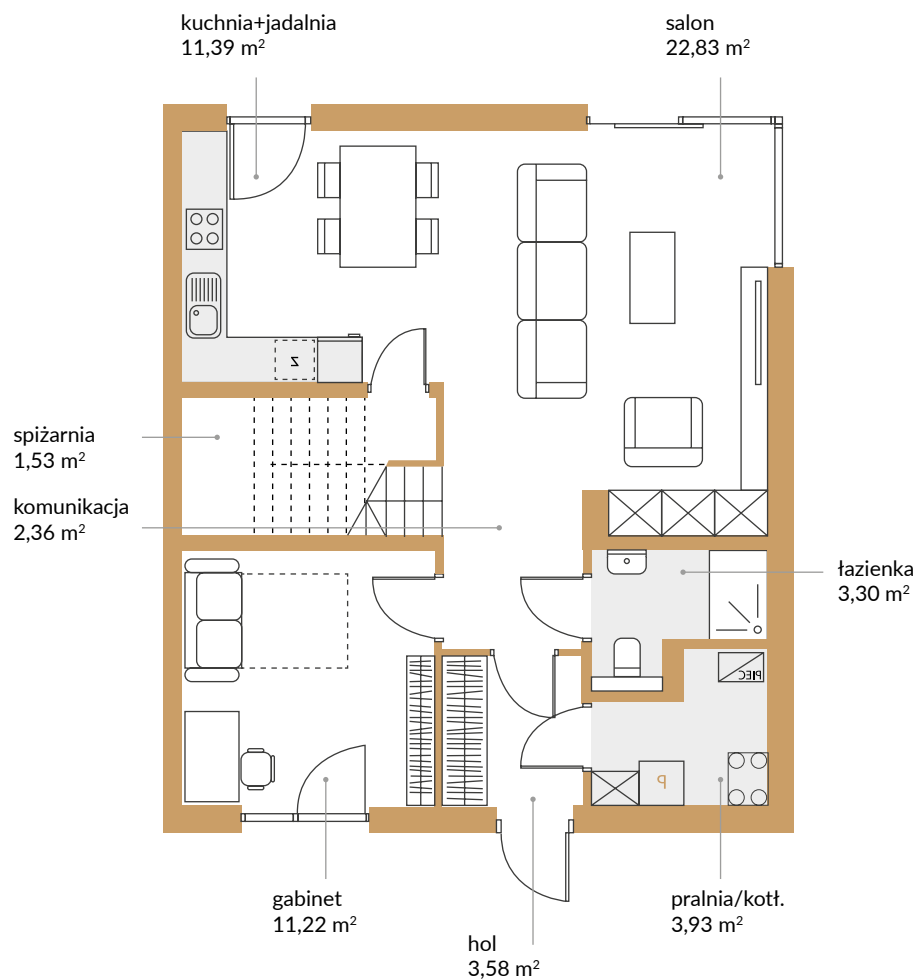
pow. domu: 123,86 m²

pow. garażu: 15,82 m²

suma: **139,68 m²**

Parter: 60,14 m²

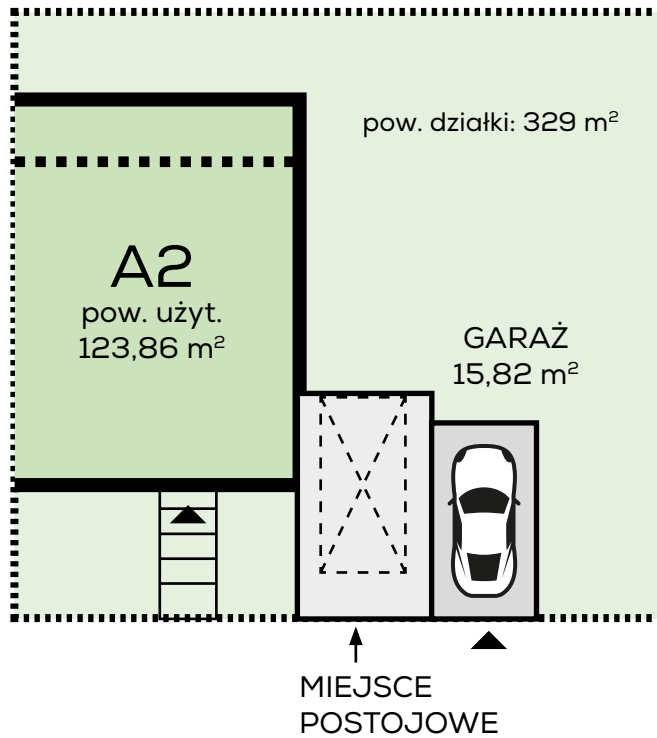
1 piętro: 63,72 m²





WILLE
JUSTOWSKIE

DOM **A** | Lokal **2**



ZAGOSPODAROWANIE
TERENU

