



WILLE

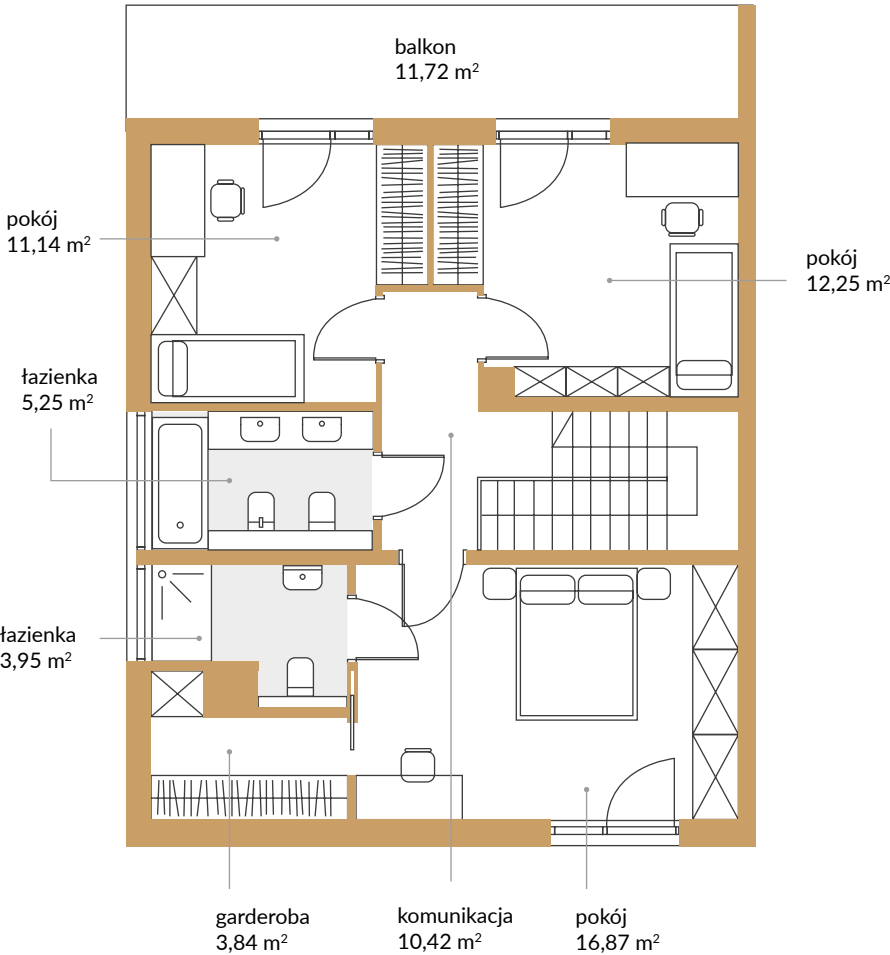
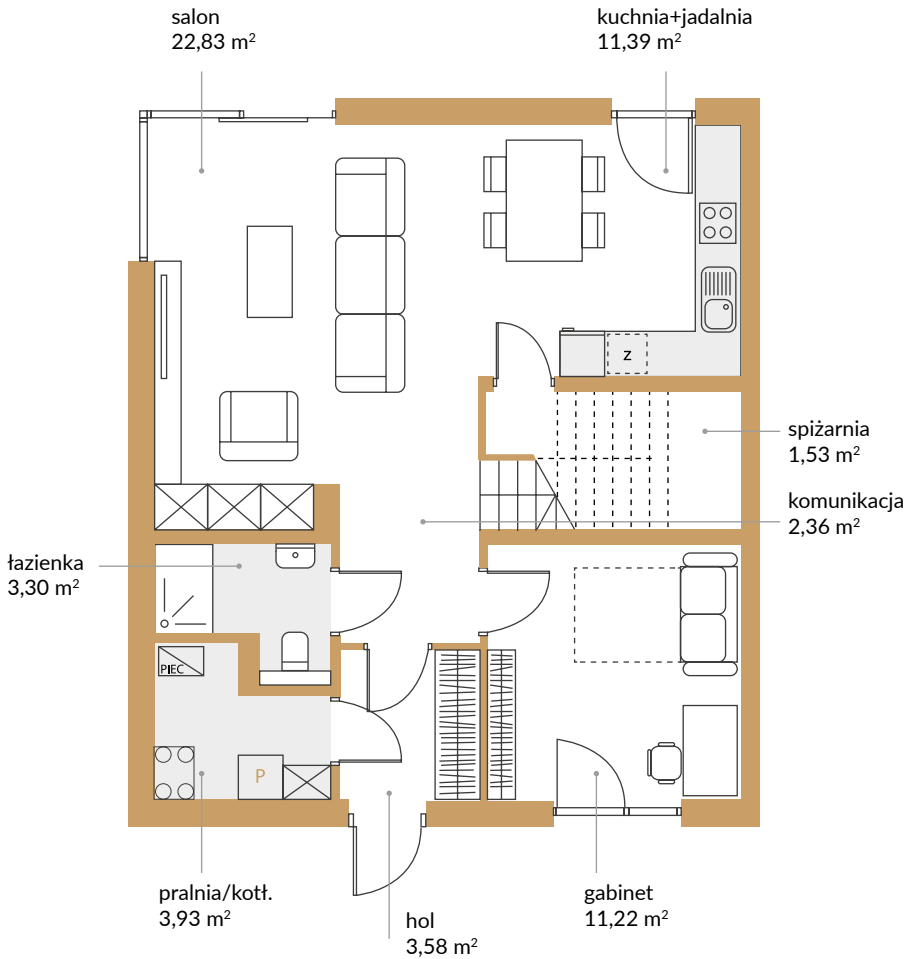
JUSTOWSKIE

DOM A | Lokal 1

pow. domu: 123,86 m²
pow. garażu: 15,82 m²
suma: **139,68 m²**

Parter: 60,14 m²

1 piętro: 63,72 m²

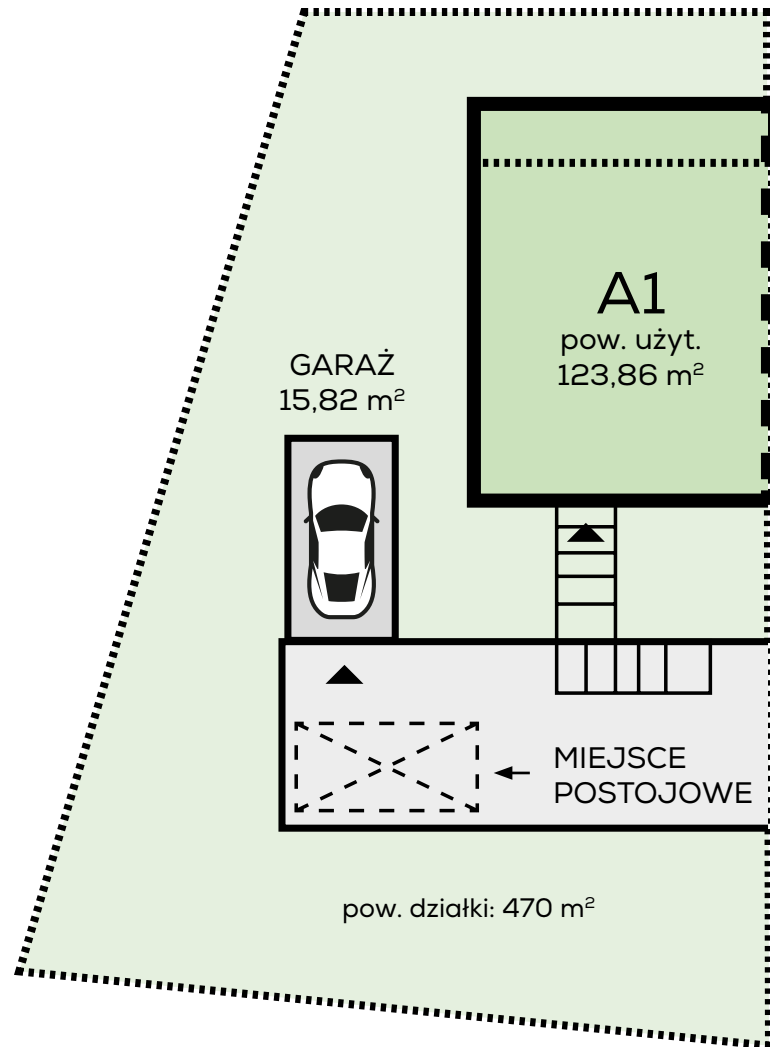




WILLE

JUSTOWSKIE

DOM A | Lokal 1



ZAGOSPODAROWANIE TERENU

